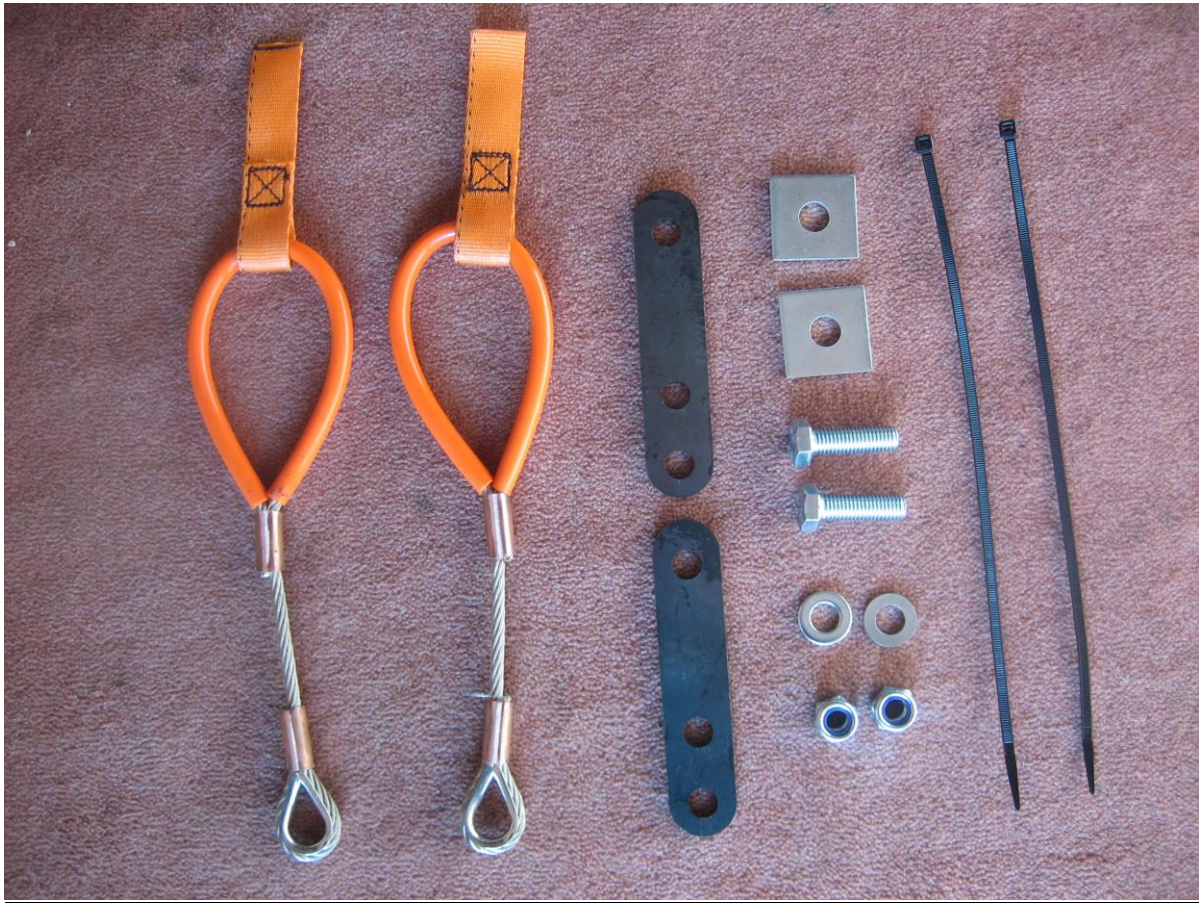


MG Trophy Championship
Towing Hook Fitting Kit Instructions CZR/0001

Front Hook kit



The Front Hook kit comprises of:-

- 1 2 off front fixing plates
- 2 2 off M12 x 40mm set screws
- 3 2 off M12 Flat washers
- 4 2 off M12 Square washers
- 5 2 off M12 Nyloks
- 6 2 off 260mm steel wire tow hooks contact Protier Lifting Services
<http://protier.co.uk/> for supply
- 7 2 off Cable ties 300 x 4.5mm

Fitting:-

- 1) Fit the two fixing plates as shown in fig 1, these bolts need to be TIGHT.
- 2) Fit the hooks as shown in fig 2, the M 12 screw/nut needs to be slack to allow sideways movement. Flat washer and square washer under nylok.
- 3) Fit the cable tie as shown in fig 3 to retain the hook tight under the bumper.
- 4) The front protrusion must not exceed 25mm (fig 4) to comply with BB Q19.1.3(b)

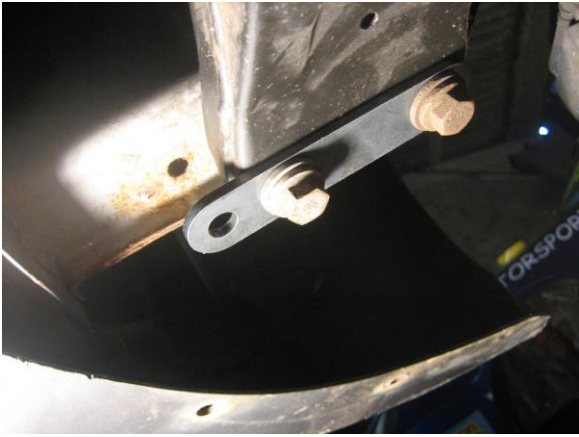


Fig 1 bracket in position



Fig 2 hook fitted to bracket

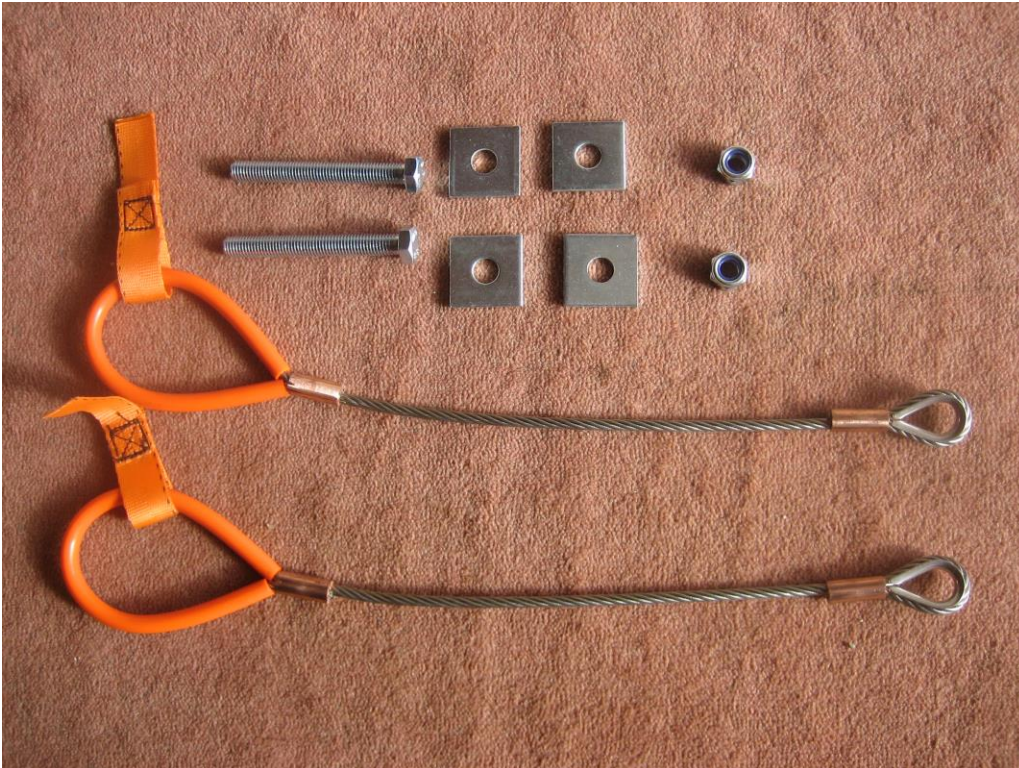


Fig 3 hook end secured under front bumper



Fig 4 no more than 25mm protrusion

Rear Hook kit



The Rear Hook kit comprises of:-

- 1 2 off M12 x 100mm set screws
- 2 2 off M12 Nyloks
- 3 4 off M12 Square washers
- 4 2 off 460mm steel wire tow hooks contact Protier Lifting Services
<http://protier.co.uk/> for supply

Fitting:-

- 1) Drill two 12mm holes 50mm back from the existing hole as shown in fig 5.
- 2) Fit the hooks as shown. Again the M 12 screw/nut needs to be slack to allow sideways movement. Fit the square washers, one under the screw head and one under the nylok.
- 3) Cut a slot 75 mm wide by 11 mm (approx) in the rear bumper to hold the towing end in position as shown.
- 4) When in use the loop end will pull through and look like fig 6.
- 5) The rear protrusion must not exceed 25mm (fig 7) to comply with BB Q19.1.3(b)



Fig 5 underneath view

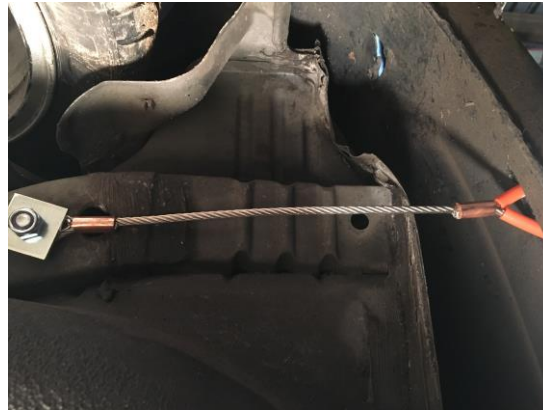


Fig 6 cable pulled tight



Fig 7 no more than 25mm protrusion

The hooks supplied conform to the recommendation in the Blue Book (2017 edition) and have been strength tested.

Spec:- 6mm diameter 7x19 1570 N/mm RHOL stainless steel wire rope with thimble eye one end and a 60 mm soft eye the other end, covered in rubber hosing and fitted with a lashing strap 100mm long.

Issue 4 12/3/18