

MG Trophy Championship  
Ballast Fitting Kit Instructions CZR/0002



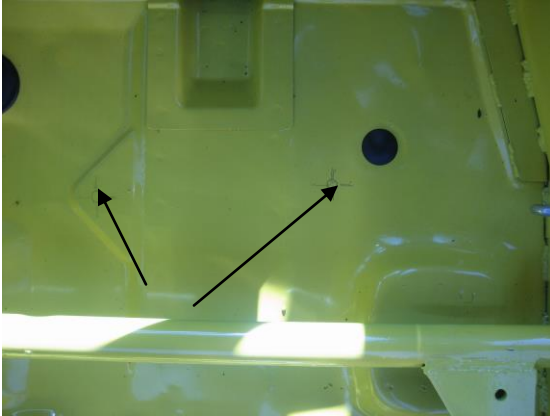
Kit contents:-

- 1 1 off black strap (under car)
- 2 1 off steel plate 250 x 200 x 3 mm (inside car)
- 3 2 off spacers 40mm od x 20mm
- 4 4 off M12 x 100mm set screws (longer screws can be provided)
- 5 4 off M12 Nyloks
- 6 6 off M12 Flat washers
- 7 2 off M12 Square washers
- 8 Lead slabs (5Kgs each) as required.

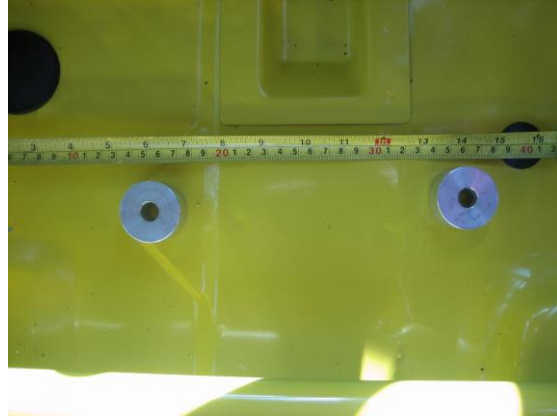
Instructions:-

1. Mark inside floor of passenger side (as per photos) for bolt hole positions. NOTE Spacers are shown to help identify hole locations, these go on the **UNDERSIDE** of the car.
2. Drill clearance holes to take two 12mm dia screws supplied. Check first for any pipework under the car that may be in the way.
3. Fit underside strap, screws, spacers, washers as shown.
4. Fit appropriate number of Trophy approved lead slabs (each are approx 5Kgs) to inside of car.

5. Fit the steel plate on top of the slabs and drill two additional holes (through the slabs and bodywork) to take the other two 12mm screws using the holes in the plate as a guide, secure with Nyloks plus washers. Only use Nyloks once.



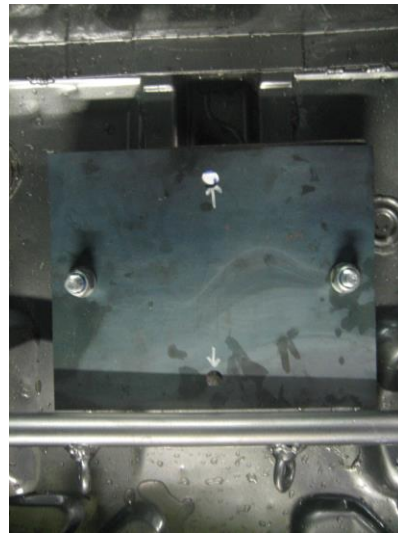
Hole locations on 8" centres.



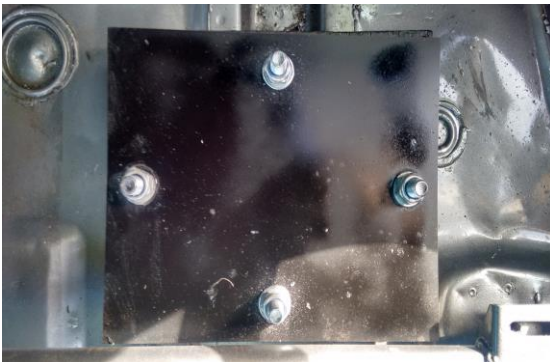
Measurement from transmission tunnel 6" & 14".



Measurement from step = 8"



Steel plate on top of lead slabs, drill 2 more holes



Additional screws fitted



Photo showing correct fixing UNDER the car